

Product catalogue



Natural Building Materials Zoo Decoration and Themeing

Steel mesh products

Hand woven, Ferrule steel mesh in black oxide, Piano wire mesh, Micro mesh

Sustainably sourced materials

Certified timber, Eucalyptus Timber, Bamboo, Bronze figures

Fair traded products

Fencing, Fiber Thatch Roofing
Liana Creeper vine, Fencing

Authentic themeing & concepts

Shop, Café themeing, Fittings, Fibre glass figures, Borneo / Sulawesi Original Houses

Why use HMJ Zoo & Theme Park Design

By constructing and decorating your zoo with sustainably harvested, fairly traded natural materials, you will demonstrate, to your visitors, your commitment to conservation, while creating an exciting and inspiring recreational environment.



HMJ Zoo & Theme Park Design Aim

We aim to provide European Zoos with, high quality, good value, authentic, environmentally friendly and fairly traded, theming, decoration & building materials, from around the world.



Services

Building materials installation and maintenance advice.

To cut down on labour costs HMJ is happy to provide you with the information needed to do installations or constructions in house.

Shop/cafe lay out advice and theming and design

With over 15 years experience in shop/cafe out fitting, HMJ can advise you on how to improve sales and create a more exciting zoo retail environment.

Consultancy Service

HMJ can give you quotes for unique theming concepts for your whole zoo or individual enclosures, play areas, cafes, bar & shops etc. Check out our web site, past project photos CD or showroom for examples.

Special wholesale/whole container prices

We offer very competitive prices for whole container orders, delivered direct to your door from our producers.

Trading Policy

HMJ Zoo Design buy their products directly from the local manufacturers, these are usually families, communities or small companies in over 10 countries. By cutting out the middleman, HMJ secure fair prices for their producers, while still being able to offer highly competitive prices to their customers. In this way HMJ also supports local skills + traditions and guarantees the customer an authentic product with a real story, at a reasonable price. All raw materials and products are sustainably sourced. All production processes are safe to both producer + end-user. Ask us for a copy of our full Ethical Trading Policy

Company Profile

HMJ Zoo Design is a Danish company set up more than 25 years ago by director, Henrik M. Jensen and his wife, Anette. They started up with a personal passion for importing and distributing exciting handicrafts and furniture; however a personal commitment and interest in zoo conservation, means the company is now dedicated to providing a tailor made, quality service for the European zoo community.



How to Find Us

HMJ's show room and shop are situated in old farm buildings in Gl. Skørping, 25km south of Aalborg in northern Denmark.

Contents



Introduction to HMJ	• • • • •	2
Ethical Trading Policy	• • • • •	4 - 5
Mesh and net	• • • • •	6 - 15
Electric Grass and Lianas	• • • • •	16 - 17
Ape Feeding Machine	• • • • •	18
References	• • • • •	19
Artificial Thatch Roofing	• • • • •	20 - 23
Park Thematization	• • • • •	24 - 31
<i>Visitor Train</i>	• • • • •	24 - 25
<i>Sulawesi Houses</i>	• • • • •	26
<i>African Themed Look</i>	• • • • •	27
<i>Borneo Long Houses</i>	• • • • •	28
<i>Jungle Themed Style</i>	• • • • •	29
<i>Asian Themed Style</i>	• • • • •	30
<i>Pirate's Themed Look</i>	• • • • •	31
Interior Thematization & Design	• • • • •	32 - 33
<i>Shop Interior Design</i>	• • • • •	32
<i>Art Deco Furniture</i>	• • • • •	33
Park Materials & Equipment	• • • • •	34 - 44
<i>Animal Figures - Fiberglass</i>	• • • • •	34
<i>Giant Insects - Fiberglass</i>	• • • • •	35
<i>Animal Figures - Bronze</i>	• • • • •	36
<i>Animal Figures - Concrete</i>	• • • • •	37
<i>Skeleton Wood</i>	• • • • •	38 - 39
<i>Liana - Creeper Vine</i>	• • • • •	40 - 41
<i>Hard Wood Tree Stumps</i>	• • • • •	42 - 44
Exotic Construction Materials	• • • • •	45 - 49
<i>Parido Timbers</i>	• • • • •	45
<i>Acaraqua Timbers</i>	• • • • •	46
<i>Eucalyptus Poles</i>	• • • • •	47
<i>Recycled Teak Tiles</i>	• • • • •	48
<i>Bamboo Poles</i>	• • • • •	49 - 51

Ethical and Environmental Trading Policy

Mission Statement:

HMJ Zoo Design aims to provide Europe Zoos with, high quality, good value, authentic, environmentally friendly & fairly traded, themeing, decoration & building materials, from around the world. HMJ Zoo Design buy their products directly from local producers, these are usually families, communities or small companies from over 10 different countries world wide. By cutting out the middleman, HMJ secure fair prices for their producers, while still being able to offer highly competitive prices to their customers. HMJ also supports local skills + traditions and insists on high standards of environmental practice. All raw materials and products are sustainably sourced and relevant certification sought when appropriate. All production processes are safe to the producer, environment and end-user. Therefore, customers can be guaranteed of an authentic product, with a real story, that does not cost the earth.

Ethical and Environmental Sourcing Policy:

Because we care about the people and environments involved in making our products we ask all our suppliers to adhere to the same demanding Ethical and Environmental codes we have set for ourselves, as described below: HMJ Zoo Design is committed to ensuring that relationships with our suppliers are ethically, environmentally as well as commercially, based. We promote the dissemination of best ethical and environmental trading practice throughout our supply chain to address this complex issue.

HMJ Aims to:

- 1) Work with customers, suppliers and other business partners in the industry, to encourage ethical and environmental trading standards and to seek continuous improvement.
- 2) Integrate ethical and environmental trading considerations, where practicable, into all aspects of our business.

HMJ Zoo Design's Principles of ethical and environmental trading:

HMJ's ethical and environmental trading principles listed below, are in line with the following international conventions:

- a) International Labour Organisation Conventions and Recommendations which comply with local legislation relating to ethical trading and human rights.
- b) "The 10 principles of the U.N.'s Global compact" covering human rights, labour, the environment and anti-corruption and
- c) The 10 Standards of Fair Trade from the International Fairtrade Association (IFAT).

With respect to the following 5 main themes, HMJ aims to:

1) Human Rights

- a) Support and respect the protection of internationally proclaimed human rights and make sure that they are not complicit in human rights abuses.

2) Labour Standards

- a) Uphold the freedom of association and the effective recognition of the right to collective bargaining;
- b) Pay "fair" prices: A fair price in the regional or local context is one that has been agreed through dialogue and participation. It covers not only the costs of production but enables production which is socially just and environmentally sound. It provides fair pay to the producers and takes into account the principle of equal pay for equal work by women and men. HMJ ensure prompt payment to their partners and, whenever possible, help producers with access to pre-harvest or pre-production financing.
- c) Eliminate of all forms of forced and compulsory labour.
- d) Support the effective abolition of child labour; HMJ respect the UN Convention on the Rights of the Child, as well as local laws and social norms in order to ensure that the participation of children in production processes of fairly traded articles (if any) does not adversely affect their well-being, security, educational requirements and need for play. When working directly with informally organised producers HMJ will ask them to

disclose the involvement of children in production.

- e) Eliminate discrimination in respect of employment and occupation. HMJ are committed to offer opportunities for promotion based on merit, irrespective of factors such as race, religion, sex, nationality or age. HMJ especially endorse gender equity, meaning that women's work is properly valued and rewarded and that women are empowered in their organizations.

- f) Ensure safe and healthy working conditions. HMJ promotes safe and healthy working environments for producers.

3) Opportunity for development

- a) Create opportunities for economically disadvantaged producers: HMJ believes Fair Trade is a strategy for poverty alleviation and sustainable development. Its purpose is to create opportunities for producers who have been economically disadvantaged or marginalized by the conventional trading system.

- b) Promote Capacity building: HMJ provide continuity and product development feed back.

- c) Promote Fair Trade: HMJ provide their customers with information about the producers, the products, and in what conditions they are made. HMJ use honest advertising and marketing techniques and aim for the highest standards in product quality and packing.

- d) Promote Fair Trade Relations: HMJ trade with concern for the social, economic and environmental well-being of marginalized small producers and do not maximise profit at their expense. HMJ maintain longterm relationships based on solidarity, trust and mutual respect that contribute to the promotion and growth of Fair Trade.

4) Anti-Corruption

- a) Work against corruption in all its forms, including extortion and bribery.
- b) Show Transparency and accountability: HMJ practices transparent management and commercial relations to deal fairly and respectfully with trading partners.

5) Environment

a) Support a precautionary approach to the following key environmental challenges;

- i) loss of biodiversity and longterm damage to ecosystems
- ii) pollution of the atmosphere and the consequences of climate change
- iii) damage to aquatic ecosystems
- iv) land degradation
- v) the impacts of chemicals use and disposal
- vi) waste production
- vii) depletion of non-renewable resource

b) Promote greater environmental responsibility,

- i) By mobilising its company, employees, customers and suppliers to reduce their carbon footprint and wider environmental impact.
- ii) Through the sourcing of sustainably harvested materials and the application of responsible methods of production.
- iii) Use natural resources efficiently and minimise waste.

c) Offer innovative products and services that minimise harm to the natural environment.

d) Measure, report and continuously improve the environmental impact of operations, products and services.



Hand Woven Stainless Steel Mesh 304/316



Our steel wire mesh is the future of enclosure materials. While it can easily fill the role of traditional fencing material, it also allows architects and designers to incorporate the mesh as an integral structural element in its own right, by using the tensile strength of the material to support loads. The mesh is hand spliced from stainless steel wire 304, and is offered in silver or black oxide finish.

The mesh is beautiful to look at, and offers very good visibility of the animals, particularly in the black oxide finish. It is also extremely tough and durable, and does not degrade, even after many years of service.

We have found that the black oxide finish we make, is a deeper black and of better quality than those of competing products. This is because we first oxidize the mesh in a hot bath, and then spray varnish it with a metallic finish which is then baked in an oven, in order to achieve the best possible finish.

The mesh can be delivered in a range of wire diameters and aperture sizes. Diameters range from 1,2 to 3,2 mm and apertures are made from 20 x 20 mm to 120 x 120 mm. See the specification table for sizes. We also produce custom sizes, if you can't find the size you're looking for.



Technical Specifications

Item name:
Stainless Steel mesh 304

Description:
Steel mesh for fencing of enclosures



Wire rope Diameter		Aperture		Strength		Weight per sqm
inch	mm	inch	mm	lbs.	KN	KG
1/8	3,2	4.75 x 4.75	120 x 120	1.600	5,1	0,83
1/8	3,2	4 x 4	102 x 102	1.600	5,1	1,02
1/8	3,2	3.55 x 3.55	90 x 90	1.600	5,1	1,14
1/8	3,2	3 x 3	76 x 76	1.600	5,1	1,35
1/8	3,2	2 x 2	51 x 51	1.600	5,1	2,03
3/32	2,4	4 x 4	102 x 102	920	2,65	0,57
3/32	2,4	3.55 x 3.55	90 x 90	920	2,65	0,64
3/32	2,4	3 x 3	76 x 76	920	2,65	0,76
3/32	2,4	2.4 x 2.4	60 x 60	920	2,65	0,99
3/32	2,4	2 x 2	51 x 51	920	2,65	1,14
5/64	2	3 x 3	76 x 76	676	2,55	0,53
5/64	2	2.4 x 2.4	60 x 60	676	2,55	0,69
5/64	2	2 x 2	51 x 51	676	2,55	0,8
5/64	2	1-1/2 x 1-1/2	38 x 38	676	2,55	1,07
1/16	1,6	3 x 3	76 x 76	480	1,43	0,34
1/16	1,6	2 x 2	51 x 51	480	1,43	0,51
1/16	1,6	1-1/2 x 1-1/2	38 x 38	480	1,43	0,68
1/16	1,6	1.2 x 1.2	30 x 30	480	1,43	0,85
1/16	1,6	1 x 1	25.4 x 25.4	480	1,43	1,02
3/64	1,2	2 x 2	51 x 51	270	0,7	0,29
3/64	1,2	1-1/2 x 1-1/2	38 x 38	270	0,7	0,38
3/64	1,2	1.2 x 1.2	30 x 30	270	0,7	0,48
3/64	1,2	1 x 1	25.4 x 25.4	270	0,7	0,58
3/64	1,2	4/5 X 4/5	20 x 20	270	0,7	0,73

Ferruled Mesh 304/316



Same properties as the hand woven mesh, but has a different aesthetic which can be suitable for different design language. In addition, it differs from handwoven mesh in mainly two areas:

In contrast to handwoven mesh, ferruled mesh can be made in virtually unlimited sizes.

If needed, panels of ferrule mesh can be joined without visible seams.



Technical Specifications

Item name:
Ferrule mesh

Description:
Stainless steel wire mesh

Supplier:
HMJ

Variations:
Black steel, Silver Steel.





structure of wire	Wire rope Diameter		Aperture		Strenght	Min. breaking load(KN)	Weight per sqm
	inch	mm	inch	mm			
7x19	1/8	3,2	4.75 x 4.75	120 x 120	1.600	5,1	0,94
7x19	1/8	3,2	4 x 4	102 x 102	1.600	5,1	1,18
7x19	1/8	3,2	3.55 x 3.55	90 x 90	1.600	5,1	1,37
7x19	1/8	3,2	3 x 3	76 x 76	1.600	5,1	1,69
7x19	1/8	3,2	2 x 2	51 x 51	1.600	5,1	3,00
7x7	3/32	2,4	4 x 4	102 x 102	920	2,65	0,64
7x7	3/32	2,4	3.55 x 3.55	90 x 90	920	2,65	0,72
7x7	3/32	2,4	3 x 3	76 x 76	920	2,65	0,88
7x7	3/32	2,4	2.4 x 2.4	60 x 60	920	2,65	1,23
7x7	3/32	2,4	2 x 2	51 x 51	920	2,65	1,50
7x7	5/64	2	3 x 3	76 x 76	676	2,55	0,62
7x7	5/64	2	2.4 x 2.4	60 x 60	676	2,55	0,88
7x7	5/64	2	2 x 2	51 x 51	676	2,55	1,11
7x7	5/64	2	1-1/2 x 1-1/2	38 x 38	676	2,55	1,55
7x7	1/16	1,6	3 x 3	76 x 76	480	1,43	0,42
7x7	1/16	1,6	2.4X2.4	60X60	480	1,43	0,58
7x7	1/16	1,6	2 x 2	51 x 51	480	1,43	0,75
7x7	1/16	1,6	1-1/2 x 1-1/2	38 x 38	480	1,43	1,06
7x7	1/16	1,6	1.2 x 1.2	30 x 30	480	1,43	1,58
7x7	1/16	1,6	1 x 1	25.4 x 25.4	480	1,43	2,10
7x7	3/64	1,2	2 x 2	51 x 51	270	0,7	0,46
7x7	3/64	1,2	1-1/2 x 1-1/2	38 x 38	270	0,7	0,65
7x7	3/64	1,2	1.2 x 1.2	30 x 30	270	0,7	1,00
7x7	3/64	1,2	1 x 1	25.4 x 25.4	270	0,7	1,32
7x7	3/64	1,2	4/5 X 4/5	20 x 20	270	0,7	1,92

Tunnel Mesh



The Tunnel mesh system is a revolutionary, new concept that consists of stainless steel wire mesh hand spliced into a round tunnel shape. Steel rings are inserted into the tunnel mesh to make it expand, and to provide suspension points. Tunnel mesh can thus be used to create floating pathways which are suspended from trees, steel posts, or from other existing zoo structures. The tunnels can be used to expand the space within which the animals can move, and thus allow the animals to express their innate behaviour with a greater degree of freedom, which has historically proven to be a big challenge in zoological parks, since parks by their very nature offer only a limited space. However, the possibilities of Tunnel mesh reach farther than just a mere expansion of roaming space. With Tunnel mesh, smaller species-specific enclosures can now be connected to bigger spaces, which can be shared by multiple species at different times of day by controlling the access to the bigger space. This also has implications for zoo design and architectural planning, since a zoo can now be planned around several big 'hubs' which have different inhabitants throughout the day.

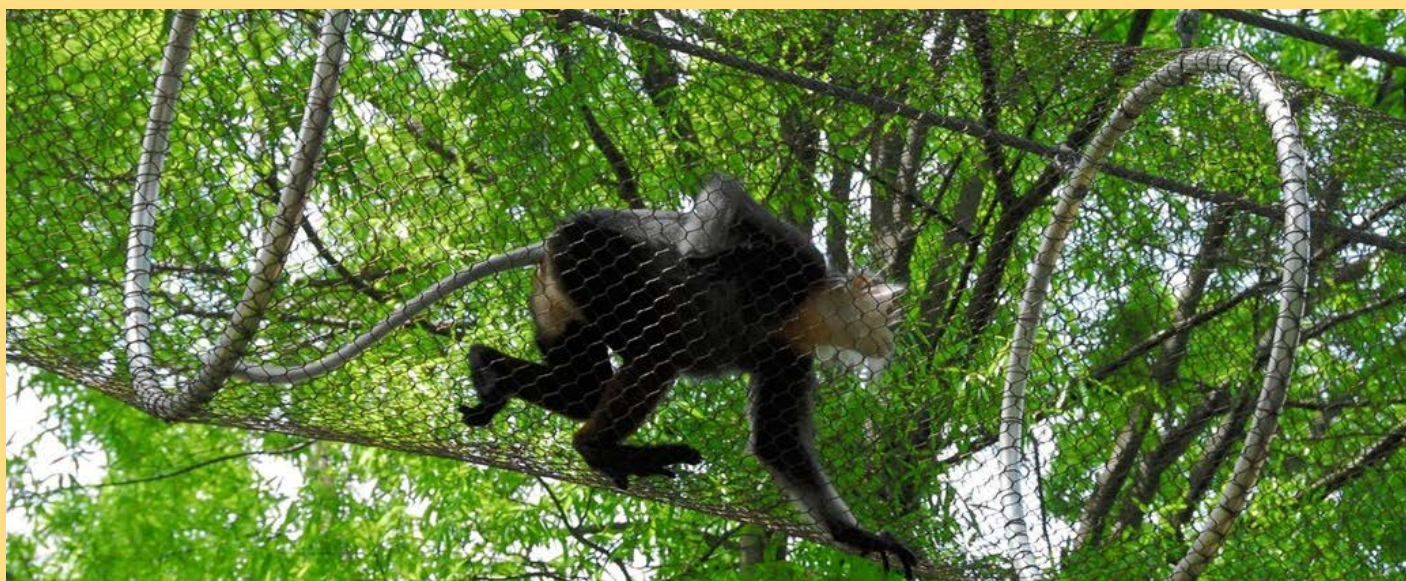
We have expanded the range with three new mesh sizes for a total of 9 different sizes, spread across three different diameters of 50, 75 and 100 cm, to

accommodate a wider variety of species that can safely use the system, please see the corresponding price list for details.

Here's what others have to say about the 360 concept:

- "The first campus-wide animal travel system of its kind in the entire world, Tunnel mesh revolutionizes how visitors can encounter animals, making a trip to the zoo more interactive than ever".
- "The still-evolving system gives larger primates like orangutans and gibbons room to explore".





Technical Specifications

Item name:
Tunnel mesh

Description:
Stainless steel wire mesh hand woven into a round tunnel shape.

Variations:

- Tube Ring (including two bolts every ring)
 - 50cm(20x1.5mm)
 - 75cm(25x2.0mm)
 - 100cm(30x2.0mm)
- Hand Woven Mesh SS 304 (Black Oxide)
 - 1.6x25x25mm
 - 1.6x30x30mm
 - 1.6x40x40mm
 - 2.0x25x25mm
 - 2.0x30x30mm
 - 2.0x40x40mm
 - 2.5x30x30mm
 - 2.5x40x40mm
 - 2.5x50x50mm
- Suspension Wire (Black Oxide)
 - 10mm



UHMWPE Net



This fiber is also known as Dyneema or Spectra fiber, but these are essentially brand names for the same thing, namely UHMWPE.

The specifications for UHMWPE are better than nylon or polyester in almost every aspect, asides from the lower melting point of UHMWPE, which is irrelevant in enclosure applications.

UHMWPE properties:

- Much more abrasion and cut resistant
- 40% lighter than nylon of the same strength
- 15 times lighter than steel of the same strength
- Much lower stretch than nylon and polyester
- More UV-tolerant than both nylon or polyester.

Due to the advanced properties of the material, service life is projected to be at least 50% higher than similar nylon netting.

UHMWPE has very low stretch and elasticity, which is an advantage in zoo applications, since the net will over time not sag as much between suspension points, as nylon net would.

Thus aviaries will be able to keep the shape that the

designer intended.

It is more than four times as resistant to abrasion than Kevlar.



Technical Specifications

Item name:
UHMWPE (Ultra High Molecular Weight
PolyEthylene) fibers.



Zagreb Zoo 2016 - 1800 Sqm.

Rope Diameter		Aperture		Weight	Strength
inch	mm	inch	mm	g/sqm	kg
1/8	3,2	4.75 x 4.75	120 x 120	95,00	630KG
1/8	3,2	4 x 4	102 x 102	105,00	630KG
1/8	3,2	3.55 x 3.55	90 x 90	120,00	630KG
1/8	3,2	3 x 3	76 x 76	140,00	630KG
1/8	3,2	2 x 2	51 x 51	210,00	630KG
3/32	2,4	4 x 4	102 x 102	50,00	280KG
3/32	2,4	3.55 x 3.55	90 x 90	55,00	280KG
3/32	2,4	3 x 3	76 x 76	65,00	280KG
3/32	2,4	2.4 x 2.4	60 x 60	80,00	280KG
3/32	2,4	2 x 2	51 x 51	95,00	280KG
5/64	2	3 x 3	76 x 76	55,00	210KG
5/64	2	2.4 x 2.4	60 x 60	70,00	210KG
5/64	2	2 x 2	51 x 51	85,00	210KG
5/64	2	1-1/2 x 1-1/2	38 x 38	110,00	210KG
1/16	1,6	3 x 3	76 x 76	32,00	140KG
1/16	1,6	2 x 2	51 x 51	48,00	140KG
1/16	1,6	1-1/2 x 1-1/2	38 x 38	63,00	140KG
1/16	1,6	1.2 x 1.2	30 x 30	78,00	140KG
1/16	1,6	1 x 1	25.4 x 25.4	95,00	140KG
3/64	1,2	2 x 2	51 x 51	30,00	88KG
3/64	1,2	1-1/2 x 1-1/2	38 x 38	40,00	88KG
3/64	1,2	1.2 x 1.2	30 x 30	50,00	88KG
3/64	1,2	1 x 1	25.4 x 25.4	60,00	88KG
3/64	1,2	4/5 X 4/5	20 x 20	75,00	88KG

Piano Wire Mesh



Our piano wire enclosure is the most unobtrusive enclosure technology available today. Consisting of narrow steel rods that are connected to a substantial steel frame under high tension, this system allows unparalleled views of the animals, but with enough strength to contain even big cats. Thereby your visitors can enjoy breathtaking, uninterrupted views of the animals in complete safety. The system must always be used in combination with either a barrier which ensures a minimum distance between the piano wire system and the audience, or alternatively a type of electric fencing on the inside of the enclosure, which prevents the animal from approaching the piano wire fully.

Piano wire panels are custom made to order for each individual order.

Technical Specifications

Item name:
Piano wire mesh

Description:
Stainless steel wire from 1,2 - 3,2 mm

Supplier:
HMJ

Variations:
Black steel, Silver Steel.





Electric Grass and Lianas



Our range of electrograss is an ingenious solution to protect plants and enclosure perimeters. The grasses are designed as clusters of wire tentacles that are connected to an energizer, thereby functioning like an electric fence.

These grasses can be placed discretely around or in between plants to offer protection against consumption by the enclosed animals.

The electroliana is virtually indistinguishable from natural lianas, yet offers electric fencing tentacles, and can be used to protect against escape from the enclosure, by covering trees, or by running the liana along the edge or walls of the enclosure.

With the help of Electrograss, electric fences can be designed invisible for the visitor's eyes.

Depending on individual requirements, we can offer protective fences in heights from 0,3 to 3 metres.

For the protection of planted areas, trees and security glass. Boundary for dry and wet trenches.

With the help of Electrolianas it is easy to protect tree-trunks, tree tops or single branches unobtrusively.

The electrograss is made of stainless steel and plastic material, and has a long service life.

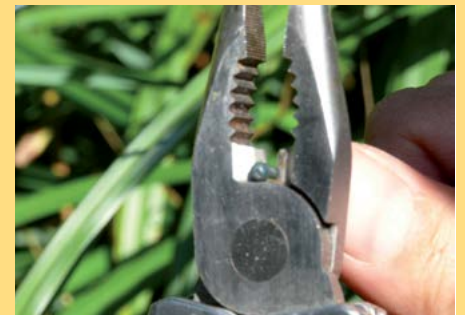


Technical Specifications

Item name:
Electro Grass & Lianas

Description:
Electric grass for keeping animals out of areas or off of fencing

Variations:
Short Grass Rock, Short Grass M, Short Grass D, Long Grass S, Long Grass M, Long Grass L, ElectroBamboo S, ElectroBamboo M, ElectorLiana A/Normal Base, ElectorLiana A/Thick Base, ElectorLiana B/Normal Base, ElectorLiana B/Thick Base, ElectorLiana C/Normal Base, ElectorLiana C/Thick Base, Climbing Liana doubly, Climbing Liana triple, Climbing Liana triple Sprial, End Cap for Electro Liana, Mounting piece for liana



Ape Enrichment and Activity Machine

This feeding machine provides enrichment and activity for great apes. With the aid of a small stick or similar tool, great apes can manipulate pieces of food across several stories and obstacles, through small slots machined in the sides of the machine. The apes thus get an opportunity to behave in a manner that is commensurate with their intellect - Something which is otherwise not easily achieved in captivity.

The transparent side plates are made from an impact and UV resistant material.

In the lockable compartment on top of the machine, there is a removable, rechargeable automatic food dispenser, which can be timed to release up to ten portions of food. Release intervals can be set between 17 and 136 minutes. Everything is sturdily built from stainless steel and other hard wearing materials for long service life. Since the machine runs on a rechargeable battery, connection to the power grid is not necessary.

The machine is engineered and produced in Germany, is serviceable for long life, and can be customized to fit your needs.



References

We have done a number of projects - big and small - throughout our more than 20 years in the business. Here is a partial list of Zoo and Amusement Parks:

Randers Rainforest, Denmark

Knuthenborg Safaripark, Denmark

Jesperhus Resort , Denmark

Oddsherred Zoo, Denmark

Dino´s Legeland, Denmark

Copenhagen Zoo, Denmark

Givskud Zoo, Denmark

Odense zoo, Denmark

Tivoli Gardens, Denmark

Fårup Summer Park, Denmark

Chester Zoo, England

Edinburgh Zoo, England

South Lake Safari Zoo, England

London Zoo, England

Burger's Zoo, Holland

Emmen Zoo, Holland

Towerland, Holland

Ölands Djurpark, Sweden

Skansen Akvarium, Sweden

Universerum, Sweden

Nordens Ark, Sweden

Karlsruhe Zoo, Germany

Paris Zoo, France

Zoo de La Barben, France

Zoo De La Flèche, France

Boissiere Zoo, France

Zoo d'Asson, France

ZooParc de Beauval, France

Touroparc Zoo, France

Zagreb Zoo, Croatia

Vezprem Zoo, Hungary

Chicago Botanic Garden, USA

Pairi Daiza, Belgien

Le Cornelle, Italy

Dublin Zoo, Ireland

Kristiansand Animalpark, Norway

Zoo Le Zlin, Czech Republic

Wroclaw Zoo, Poland

Bioparc, Spain

We have worked with more than 125

Zoos over the last 20 years in

Denmark and the rest of Europe

Artificial Thatch Roofing - Bali Palm Thatch



Thatch roofing made by artificial fibers is a very good alternative to expensive traditional thatching, as it provides a very natural thatching which looks so convincing that even experts cannot readily tell the difference, before actually touching the roof by hand.

At the same time artificial fiber thatching has a number of advantages: It is not infested by insects or rodents, it does not rot, mold or discolor, and is generally extremely low maintenance. Moreover, the fiber can be installed easily by almost anyone, as one does not have to be skilled in thatch work to use the material.

The suppliers of the raw material for the roofing are market leaders BASF and Clariant, and we are therefore confident in providing a 20 year warranty on the products. The product will last +50 years, and is made from polypropylene which is a thoroughly tested material - No toxic PVC is involved.

Our artificial thatch fiber has acquired a UL94 Class B fire rating by an independent test laboratory. In practice however, it is the sub roof which determines the fire retardancy of a building. Our artificial thatch is designed to be fitted to an existing roof, e.g. made of steel, and is consequently vastly more fire retardant than conventional thatching.

Chester Zoo Islands Project 2015



Artificial Thatch Roofing - Fiber Reed



Technical Specifications

Item name:
Artificial roofing & Artificial umbrellas

Description:
Artificial thatch, reeds, straw roofing and umbrellas

Variations:
Thatch, reeds, straw roofing and umbrellas



Artificial straw umbrellas



Visitor Train



Our visitor trains are produced as a joint venture between a German and a Chinese company, which gives the best that both countries have to offer: High technical quality and reliability, but at a very competitive price.

All critical parts are German made, including brakes and connection joints. The engine is an IVECO licensed diesel of 2.8 or 3.8 liter displacement. The trains are lit by LED lights. Each train comes with a package of additional wearing parts, which lasts for one year of service.

The train can be produced in any color you desire, with logo on the front and side. We also produce a safari version with PVC thatch roofing. In addition, a wide array of customization options exist - Please contact us for further information.

As standard, one of the three wagons is equipped with a ramp for easy wheel chair access, and a flex-

ible compartment with foldable seats, thereby accommodating handicapped and non-handicapped people alike.

In Europe the trains can be leased under a very favorable scheme, which means that no payment is required up front, and payments are only made during the seven months of the high season, making the train very feasible to acquire.

The train can also be bought on normal payment, meaning 50 percent on order, rest when shipped onboard.

As standard, the visitor train consists of one locomotive and three wagons. Each wagon seats 20 or 28 people. The maximum speed is 25km/h according to European law. The wagons can be produced in either open or closed configurations, see pictures for reference.



Technical Specifications

Item name:

Trains

Description:

High quality trains for transport in and around parks.

Price

Normal HMJ payment terms or via leasing scheme. Please contact us for further information.

Variations:

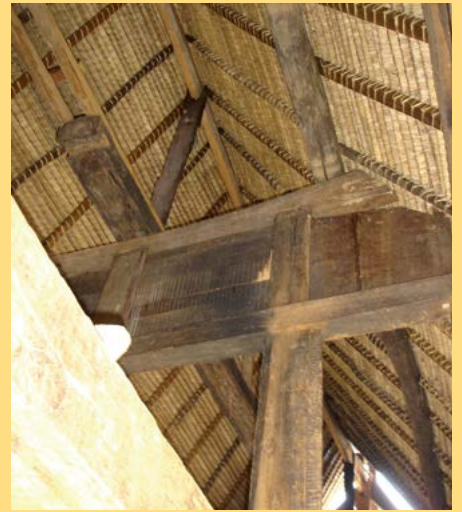
- OPEN WAGONS
- CLOSED WAGONS
- 20 seater wagons, 2,8 liter engine, 2,8 ltr diesel locomotive + 1 closed wagon + 2 open wagon with doors, carrying 20 people pr wagon.
- 20 seater wagons, 3,8 liter engine, 4 wheel drive, 3,8 ltr diesel locomotive + 1 closed wagon + 2 open wagon with doors, carrying 20 people pr wagon
- 28 seater wagons, 2,8 liter engine, 2,8 ltr diesel locomotive + 1 closed wagon + 2 open wagon with doors, carrying 28 people pr wagon
- 28 seater wagons, 3,8 liter engine, 4 wheel drive, 3,8 ltr diesel locomotive + 1 closed wagon + 2 open wagon with doors, carrying 28 people pr wagon

Technical data:

- Max speed: 25 km/h
- Max climbing gradient (full load): 20 degrees
- Braking distance: $\geq 5m$
- Radius of turning circle: $\geq 7m$
- Engine type: IVECOSOFIM8140.43S diesel engine inline four engine, common rail, water cooling, direct injection diesel engines
- Engine displacement: 2.8L
- Engine power: 92kw
- Engine torque: 290Nm/1600rpm
- Braking system: Whole vehicle gas pushed oil braking system
- Steering system: Trapezoid accurate tracking steering equipment
- Traction system: ISB gapless
- Capacity: 28 adults or 33 children each wagon
- Guarantee: 1 year



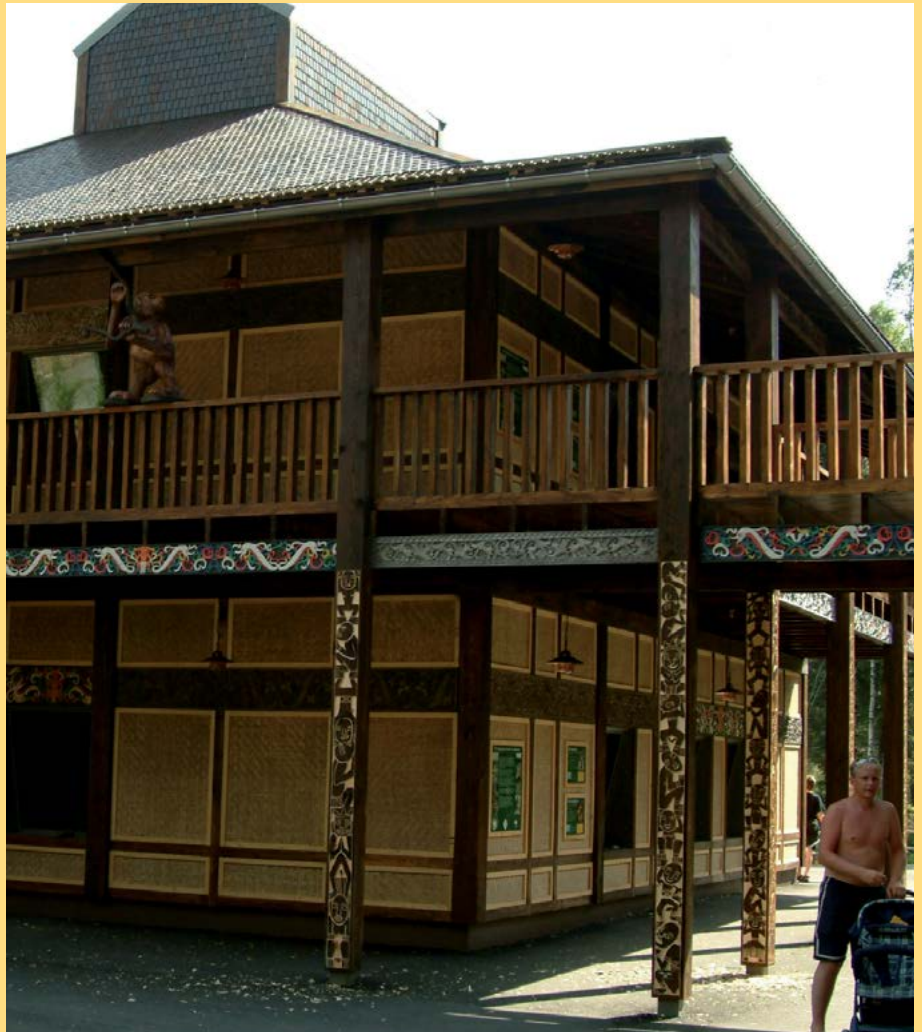
Sulawesi Houses



African Themed Look



Borneo Long Houses



This model of houses can be produced on order.

Jungle Themed Look



Asian Themed Style



Lalandia, Denmark



14 meter high

Pirate Themed Look



Shop Interior Design

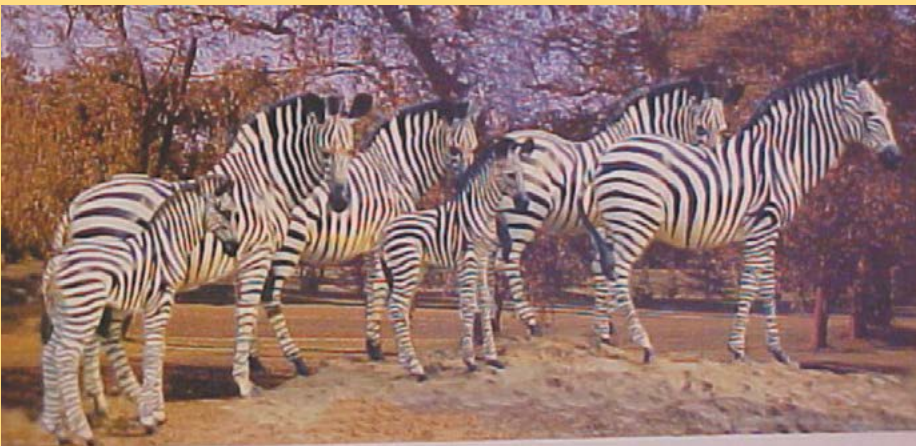


Shop interior design can be produced on order.

Art Deco Furniture



Animal Figures - Fiberglass



62x106x58 cm



106x124x138 cm



102x124x40 cm



58x283x86 cm



Giant Insects - Fiberglass

2,5 - 5 meter



Animal Figures - Bronze



Animal Figures - Concrete



Lalandia, Denmark



Serengeti Park, Tyskland
Height :2.5 m



Serengeti Park, Tyskland
Height :2.5 m



Serengeti Park, Tyskland
Height :2.5 m

We can custom make any kind of animal you request.

Up to 8 meters in size.

Skeleton Strangler-fig Wood



Suggested use

This exciting new product will provide an stimulating climbing frame/ behavioural enrichment tool, for a variety of species, as well as it making enclosures more attractive and interesting for the visitors. Also available as furniture and/ or varnished for interior decoration – contact us for photos and prices.

Sustainability

This extremely fast growing timber is sustainably, selectively and legally extracted from abundant forest areas of Java. They are extracted once the host tree has died naturally, leaving the skeleton' structure behind.

A) Individual trunks

Size: 2 - 4m high x 40-80cm diameter.

Minimum order: 3 pieces

B) Full Container

Quantity: = approx. 25 pieces per container

Order Time: 3 months

Transportation: Not included from Denmark.

Terms of payment: With in 8 days of invoice issue date.

50% deposit required for full container orders.

Contact: Henrik for specific quotes for transport from DK, container prices and interior deco. trunks and/ or furniture

Also available as furniture and/or varnished for interior decoration.

Liana - Creeper Vine



Details

Product information

This real dried liana (creeper vine) is sustainably harvested from areas of abundance in Thailand and provides fair trade for small farming families. It is excellent for decorating aquaria, vivaria and small mammal exhibits, giving animals an interesting and natural climbing substrate. It can be soaked and re-shaped to follow what ever form is desired.

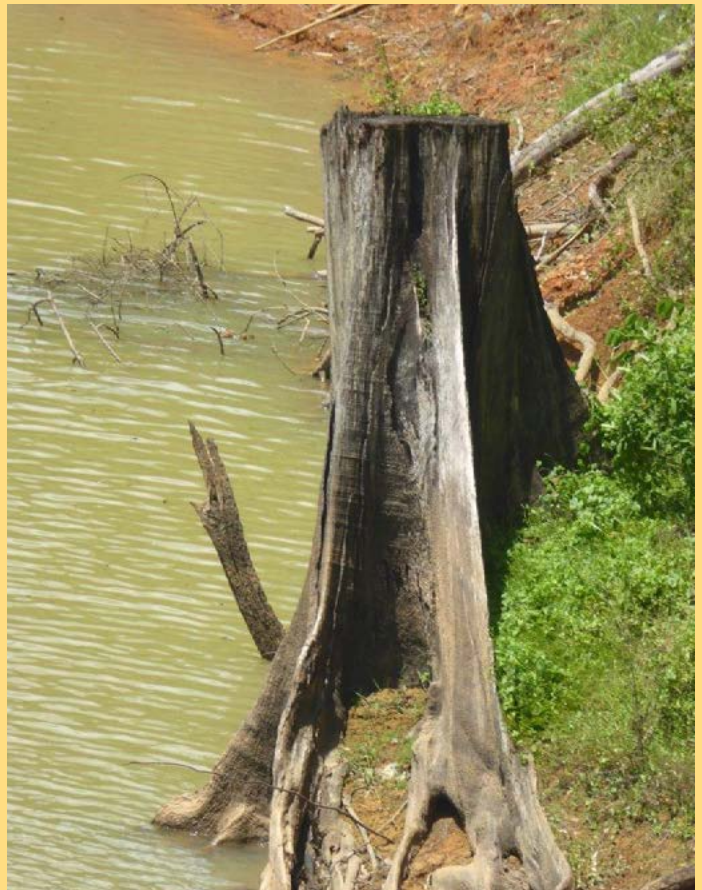
Small lianas in rolls - packed in pallet crates (100x100x220 cm)

To bring you the best value for money for your liana, by reducing handling and transport costs, we can now supply liana packed in pallet crates in Indonesia, ready to be shipped directly to you.

Each roll 70	= 2.5-5 cm diameter; 4 -7 m long
Roughly 50 rolls	= 200 meters per pallet (approximately)
Pallet crate size	= 1m x 1 m x 2.20
Order Time:	3 months – unless in stock
Transportation:	This price does not include transport from Dk.
Terms of payment:	With in 8 days of invoice issue date.



Hard Wood Roots



Hard Wood Trunks



Hard Wood Roots & Hard Wood Trunks

Suggested use

The stumps are perfect for theming enclosures and tropical houses and for constructing climbing structures for animals and visitors alike. The remaining objects are still hard as steel and will last for more than 50 years.

Sustainability

Sustainably sourced, old-growth roots.
All timber is sustainably and legally extracted. These impressive stumps are a sustainable bi-product of the teak and other hard wood timber trades, from over 50 years ago.

By purchasing these items you help to create an income for local people out of otherwise non-commercial waste wood.

Product information

	Various	
	Height (m)	Diameter (m)
Hard Wood Roots	1 - 3 m	0.75 - 1.5 m
Hard Wood Trunks	1 - 2.25 m	Up to 1.5 m

Quantity of each items in a 40 ft. container 4-8 big size / 5-10 small size.

Order Time:	1-2 months + transport time
Transportation:	This price does not include transport from Dk.
Terms of payment:	With in 8 days of invoice issue date. 50% deposit required for full container orders.

Parido Timbers - Certified



Acaraqua Timbers - Certified



Edinburgh Zoo



Colchester Zoo

Eucalyptus Poles, CCA Treated



Recycled Teak Tiles

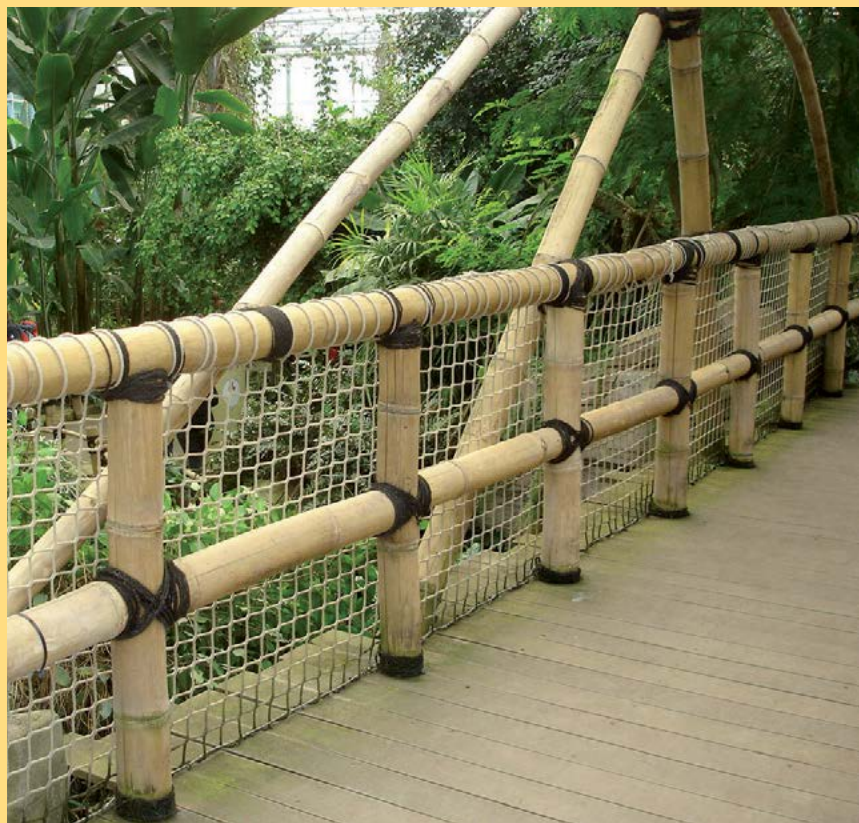


Giant Bamboo - up to 12 m length



Diameter 20 - 25 cm (worlds biggest diameter)

Yellow and Black Bamboo Poles



Length up to 12 meter.

Diameter: 4 -18 cm



Save money on freight, and stock up on a large inventory of bamboo, which has a multitude of uses, and will last you a long time, or share a container with your zoo partners

Dimensions:
5,80 meters long,
diameter 4-18 cm



CORPORATE MEMBER OF:



BUSINESS PARTNERS:

- SCENAREA, Denmark - www.scenarea.dk
- ZOOPROFIS, Germany - www.zoopprofessionals.de
- TROPICAL ZOO PLANTS, Denmark - www.tropicalzooplants.dk
- ZOOPLY, Denmark - www.makemake.dk
- BIO/ZOO Information, Denmark - www.biozooinformation.eu
- ARCHIFUTURE, Sweden - www.archifuture.com
- NØRVO SPORTSNET, Denmark - www.norvosportsnet.dk



HMJ Design A/S
Gl. Skørpingvej 156
9520 Skørping • Denmark
Phone: +45 4058 1621
Mail: henrik@hmj-design.dk

www.hmj-design.com